

Verderflex

Rapide R2S



VERDERFLEX®

Verderflex Rapide R2S Specifications

Standard Speeds	60, 113, 151 & 220 RPM
Control	Inverter Optional
Multi-channel	Up to 4 channels (when factory built)
Voltage	230/400V 50Hz (Single Phase Available to special order)
Installed Motor Power	0.37 kW 50Hz
Protection Class	IP55
Standard Tube Options	Verderprene, Silicone
Tube Size	3.2 x 2.4 mm, 4.8 x 2.4 mm, 6.4 x 2.4 mm, 8.0 x 2.4 mm
Weight	15.5 kg

Flow Rates

Tube	RPM	Flow ml/min	Flow l/hr
3.2 x 2.4	60	100	6
3.2 x 2.4	113	180	10.8
3.2 x 2.4	151	240	14.4
3.2 x 2.4	220	360	21.6
4.8 x 2.4	60	180	10.8
4.8 x 2.4	113	360	21.6
4.8 x 2.4	151	450	27
4.8 x 2.4	220	670	40.2
6.4 x 2.4	60	300	18
6.4 x 2.4	113	520	31.2
6.4 x 2.4	151	680	40.8
6.4 x 2.4	220	1020	61.2
8.0 x 2.4	60	420	25.2
8.0 x 2.4	113	820	49.2
8.0 x 2.4	151	1080	64.8
8.0 x 2.4	220	1560	93.6

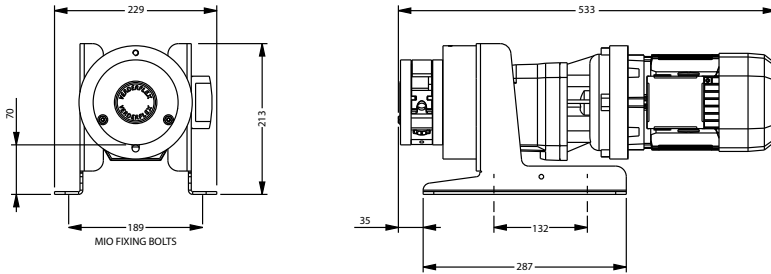
Nominal pump speed based on 50Hz operation

Flows are typical and were measured with water at 20°C with no suction lift or discharge pressure. Actual flows will vary according to suction conditions, discharge pressure, tube material and production tolerances.

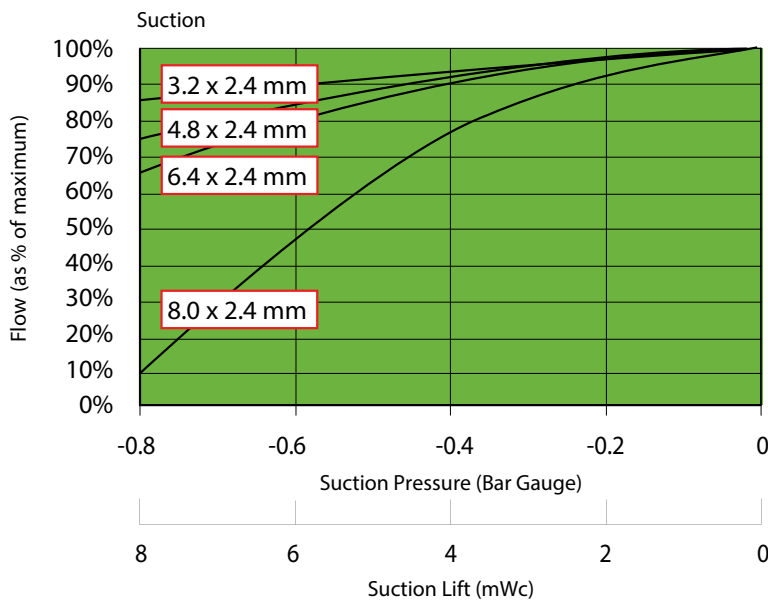
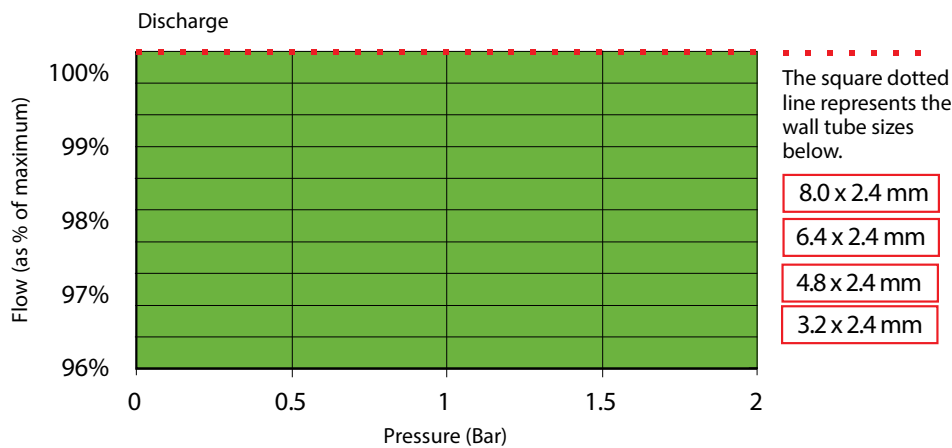


Verderflex

Rapide R2S



All dimensions are in mm.
All dimensions and weights are for guidance only.



Find your local supplier
at www.verderflex.com

For construction installation and floor mounting drawings
please contact your local authorised Verderflex® distributor.

VERDER
passion for pumps

Verderflex

Rapide R3



VERDERFLEX®

Verderflex Rapide R3 Specifications

Standard Speeds	68, 137 and 196 RPM
Control	Inverter Optional
Rotor Assembly	Anodised Aluminium with Two Nylatron® Rollers
Voltage	230/400V 50Hz (Single Phase Available to special order)
Installed Motor Power	0.18 kW 50Hz
Protection Class	IP55
Standard Tube Options	Verderprene, Silicone
Tube Size	6.4 x 3.2 mm, 8.0 x 3.2 mm, 9.6 x 3.2 mm
Weight	5kg

Flow Rates

Tube	RPM	Flow ml/min	Flow l/hr
6.4 x 3.2	68	503	30
6.4 x 3.2	137	992	60
6.4 x 3.2	196	1,413	85
6.4 x 3.2	*270	1,998	120
8.0 x 3.2	68	796	48
8.0 x 3.2	137	1,568	94
8.0 x 3.2	196	2,235	134
8.0 x 3.2	*270	3,159	190
9.6 x 3.2	68	966	58
9.6 x 3.2	137	1,903	114
9.6 x 3.2	196	2,712	163
9.6 x 3.2	*270	3,834	230

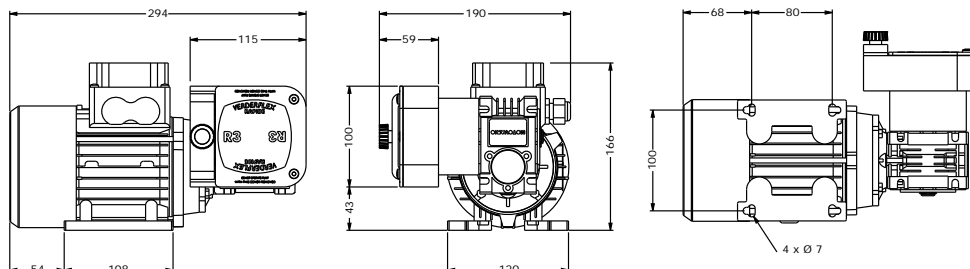
Nominal pump speed based on 50Hz operation
*270 RPM is a non-standard speed

Flows are typical and were measured with water at 20°C with no suction lift or discharge pressure. Actual flows will vary according to suction conditions, discharge pressure, tube material and production tolerances.



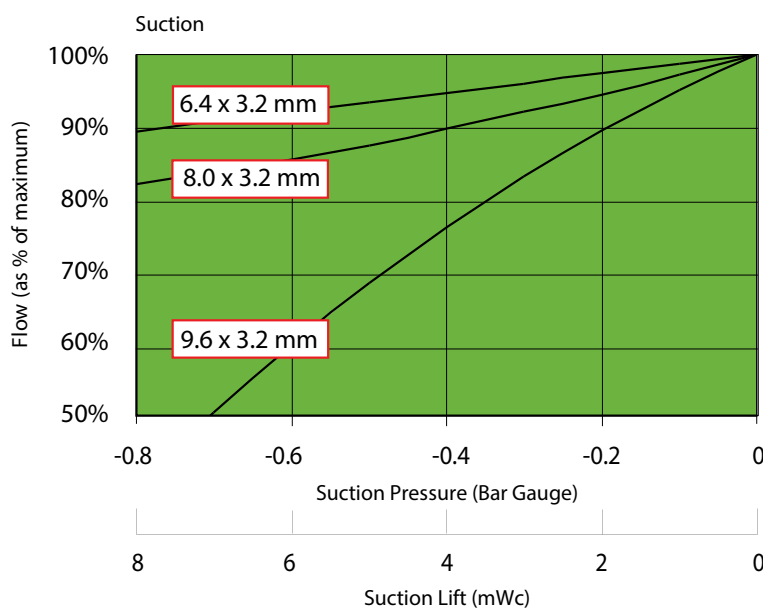
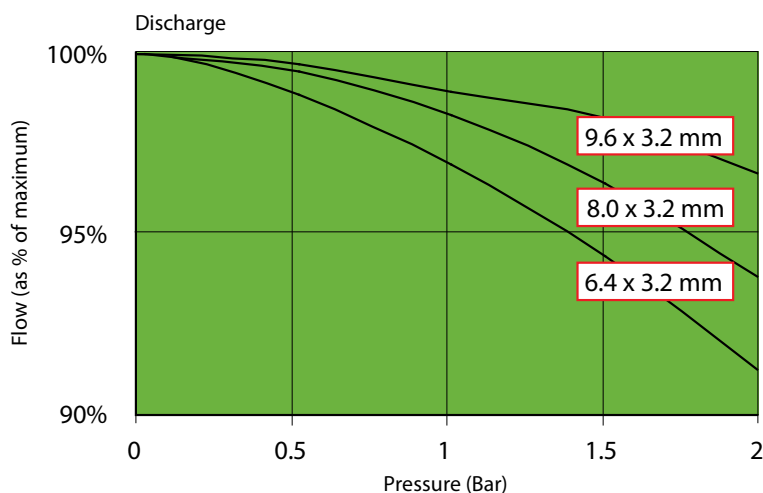
Verderflex

Rapide R3



All dimensions are in mm.

All dimensions and weights are for guidance only.



Find your local supplier
at www.verderflex.com

For construction installation and floor mounting drawings
please contact your local authorised Verderflex® distributor.

VERDER
passion for pumps

Verderflex

Rapide R3S



VERDERFLEX®

Verderflex Rapide R3S Specifications

Standard Speeds	60, 113, 151 & 220 RPM
Control	Inverter Optional
Multi-channel	up to 4 channels (when factory built)
Voltage	230/400V 50Hz (Single Phase Available to special order)
Installed Motor Power	0.37 kW 50Hz
Protection Class	IP55
Standard Tube Options	Verderprene, Silicone
Tube Size	3.2 x 2.4 mm, 4.8 x 2.4 mm, 6.4 x 2.4 mm, 8.0 x 2.4 mm, 9.6 x 2.4 mm
Weight	16.5 kg

Flow Rates

Tube	RPM	Flow ml/min	Flow l/hr
4.8 x 2.4	60	200	12
4.8 x 2.4	113	400	24
4.8 x 2.4	151	600	36
4.8 x 2.4	220	800	48
6.4 x 2.4	60	400	24
6.4 x 2.4	113	750	45
6.4 x 2.4	151	1000	60
6.4 x 2.4	220	1400	84
8.0 x 2.4	60	600	36
8.0 x 2.4	113	1100	66
8.0 x 2.4	151	1400	84
8.0 x 2.4	220	2000	120
9.6 x 2.4	60	750	45
9.6 x 2.4	113	1400	84
9.6 x 2.4	151	1850	111
9.6 x 2.4	220	2700	162

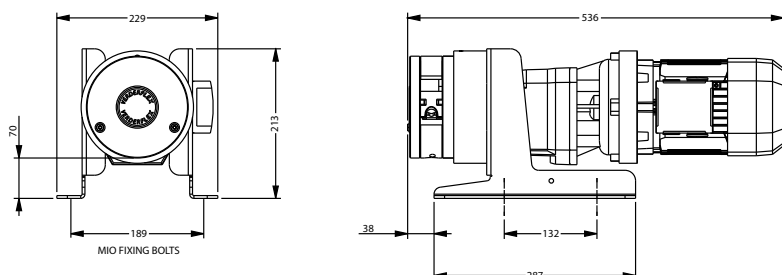
Nominal pump speed based on 50Hz operation
Note: 3.2 x 2.4 mm tubing available

Flows are typical and were measured with water at 20°C with no suction lift or discharge pressure. Actual flows will vary according to suction conditions, discharge pressure, tube material and production tolerances.

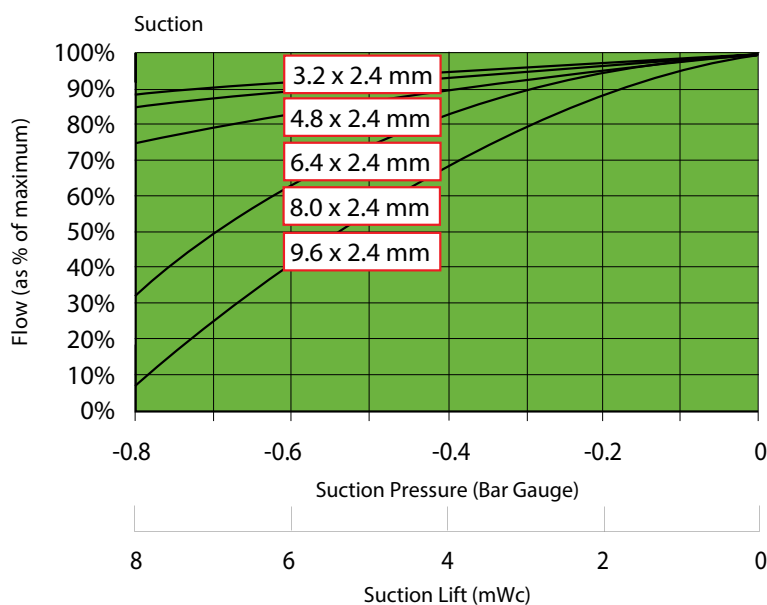
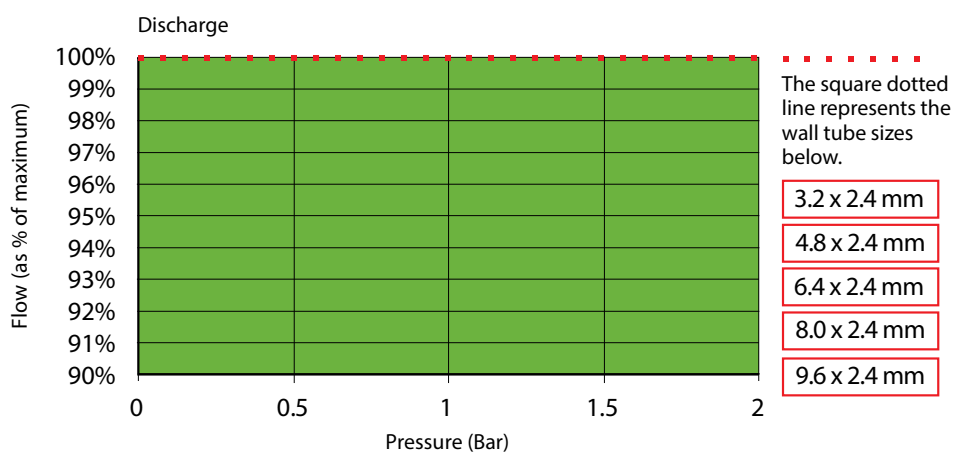


Verderflex

Rapide R3S



All dimensions are in mm.
All dimensions and weights are for guidance only.

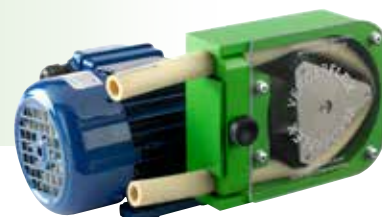


Find your local supplier
at www.verderflex.com

For construction installation and floor mounting drawings
please contact your local authorised Verderflex® distributor.

Verderflex

Rapide R6



VERDERFLEX®

Verderflex Rapide R6 Specifications

Standard Speeds	68, 137 and 196 RPM
Control	Inverter Optional
Rotor Assembly	Anodised Aluminium with Three Nylatron® Rollers
Voltage	230/400V 50Hz (Single Phase Available to special order)
Installed Motor Power	0.18 kW 50Hz
Protection Class	IP55
Standard Tube Options	Verderprene, Silicone
Tube Size	12.7 x 3.2 mm
Weight	6.5kg

Flow Rates

Tube	RPM	Flow ml/min	Flow l/hr
12.7 x 3.2	68	2,250	135
12.7 x 3.2	*89	3,000	180
12.7 x 3.2	137	4,450	270
12.7 x 3.2	196	6,350	380

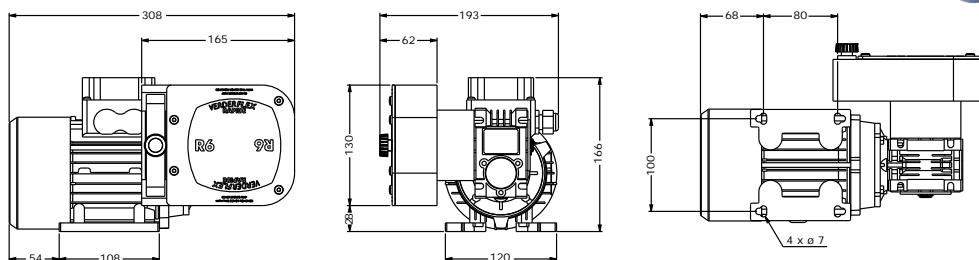
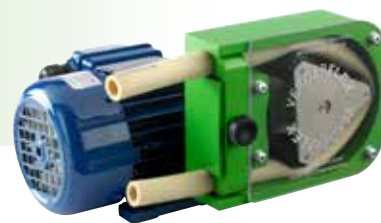
Nominal pump speed based on 50Hz operation
*89 RPM is a non-standard speed

Flows are typical and were measured with water at 20°C with no suction lift or discharge pressure. Actual flows will vary according to suction conditions, discharge pressure, tube material and production tolerances.



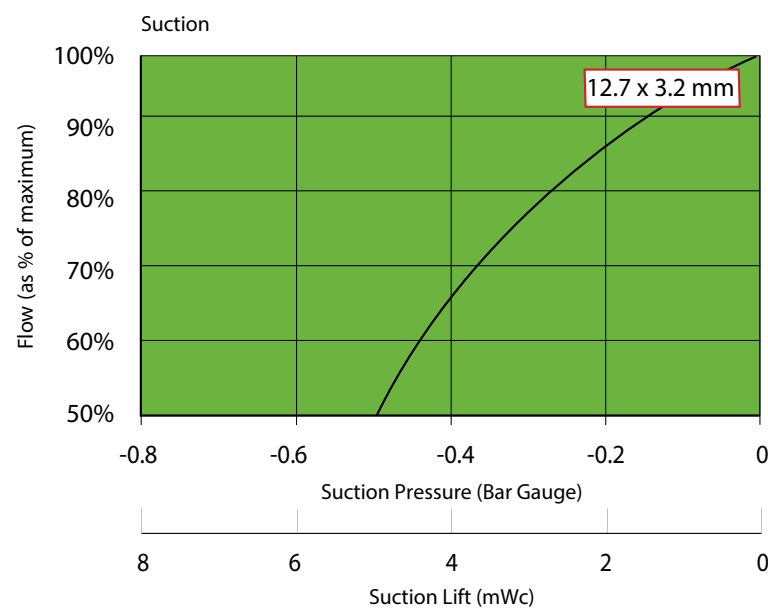
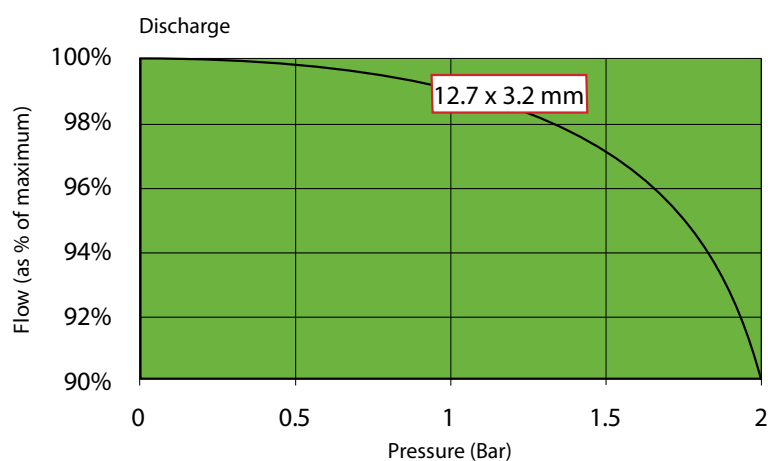
Verderflex

Rapide R6



All dimensions are in mm.

All dimensions and weights are for guidance only.



**Find your local supplier
at www.verderflex.com**

For construction installation and floor mounting drawings
please contact your local authorised Verderflex® distributor.

VERDER
passion for pumps

Verderflex

Rapide R7S



VERDERFLEX®

Verderflex Rapide R7S Specifications

Standard Speeds	60, 113, 151 & 220 RPM
Control	Inverter Optional
Multi-channel	Up to 4 channels (when factory built)
Voltage	230/400V 50Hz (Single Phase Available to special order)
Installed Motor Power	0.37 kW 50Hz
Protection Class	IP55
Standard Tube Options	Verderprene, Silicone
Tube Size	6.4 x 2.4 mm, 9.6 x 2.4 mm, 12.7 x 3.2 mm, 15.9 x 3.2 mm
Weight	18 kg

Flow Rates

Tube	RPM	Flow ml/min	Flow l/hr
6.4 x 3.2	60	330	19.8
6.4 x 3.2	113	730	43.8
6.4 x 3.2	151	910	54.6
6.4 x 3.2	220	1335	80.1
9.6 x 3.2	60	755	45.3
9.6 x 3.2	113	1460	87.6
9.6 x 3.2	151	2000	120
9.6 x 3.2	220	2915	174.9
12.7 x 3.2	60	1335	80.1
12.7 x 3.2	113	1585	95.1
12.7 x 3.2	151	3330	199.8
12.7 x 3.2	220	5080	304.8
15.9 x 3.2	60	1580	94.8
15.9 x 3.2	113	3000	180
15.9 x 3.2	151	4165	249.9
15.9 x 3.2	220	6250	375

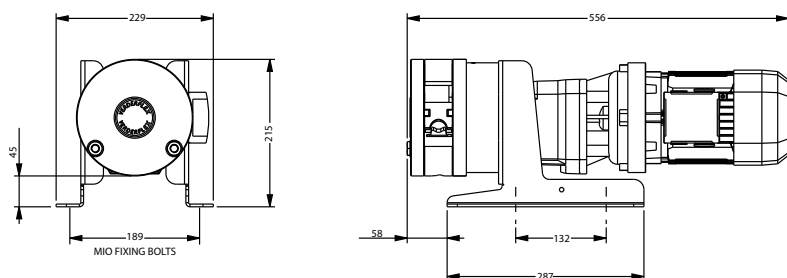
Nominal pump speed based on 50Hz operation

Flows are typical and were measured with water at 20°C with no suction lift or discharge pressure. Actual flows will vary according to suction conditions, discharge pressure, tube material and production tolerances.

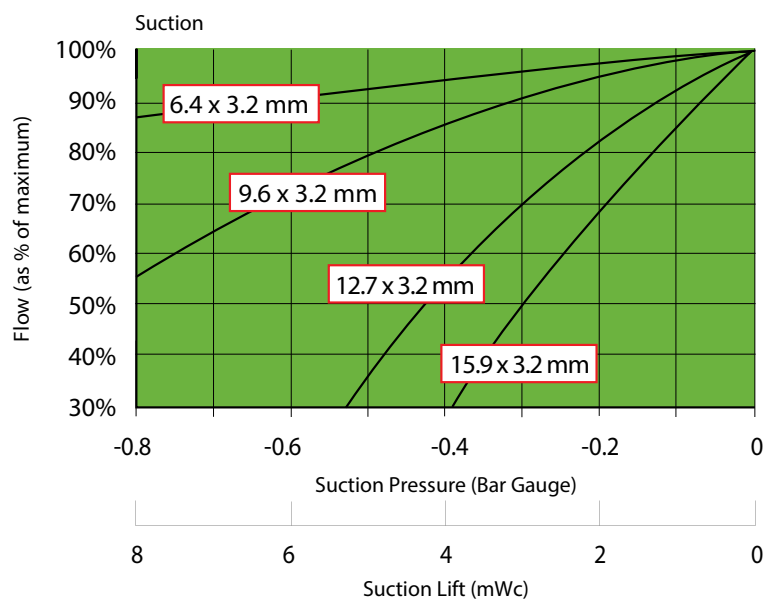
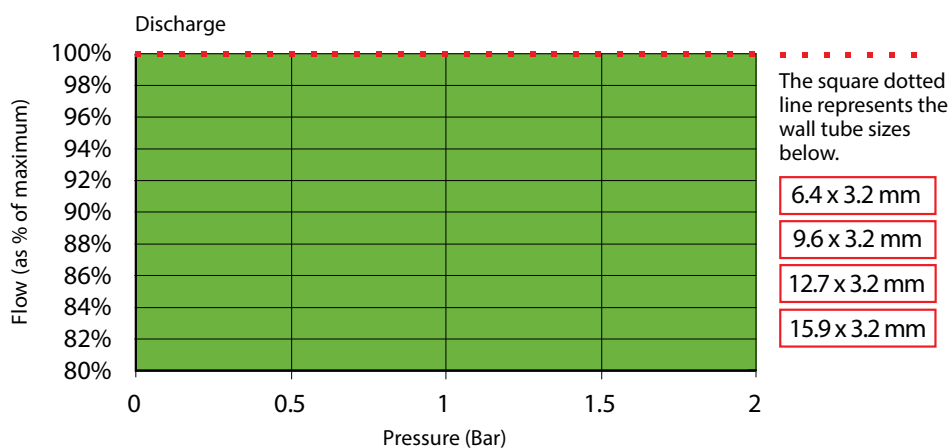


Verderflex

Rapide R7S



All dimensions are in mm.
All dimensions and weights are for guidance only.



Find your local supplier
at www.verderflex.com

For construction installation and floor mounting drawings
please contact your local authorised Verderflex® distributor.

VERDER
passion for pumps

Verderflex

Rapide R8



VERDERFLEX®

Verderflex Rapide R8 Specifications

Standard Speeds	68, 137 and 196 RPM
Control	Inverter Optional
Rotor Assembly	Anodised Aluminium with Three Nylatron® Rollers
Voltage	230/400V 50Hz (Single Phase Available to special order)
Installed Motor Power	0.18 kW 50Hz
Protection Class	IP55
Standard Tube Options	Verderprene, Silicone
Tube Size	12.7 x 3.2 mm
Weight	7kg

Flow Rates

Tube	RPM	Flow ml/min	Flow l/hr
12.7 x 3.2	68	2,800	170
12.7 x 3.2	*89	3,650	220
12.7 x 3.2	137	5,000	330
12.7 x 3.2	196	7,800	470

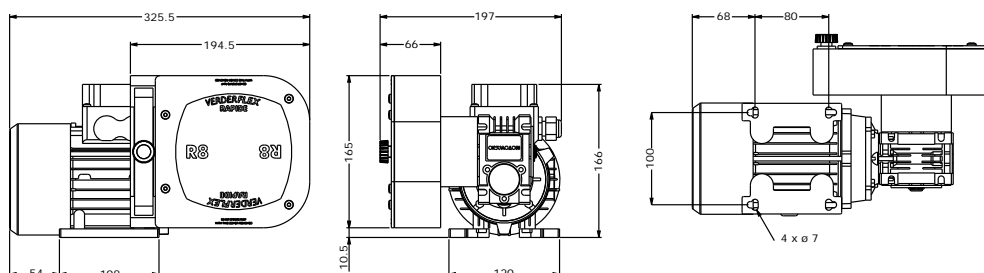
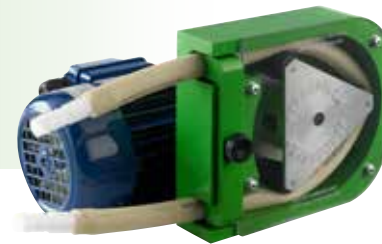
Nominal pump speed based on 50Hz operation
*89 RPM is a non-standard speed

Flows are typical and were measured with water at 20°C with no suction lift or discharge pressure. Actual flows will vary according to suction conditions, discharge pressure, tube material and production tolerances.



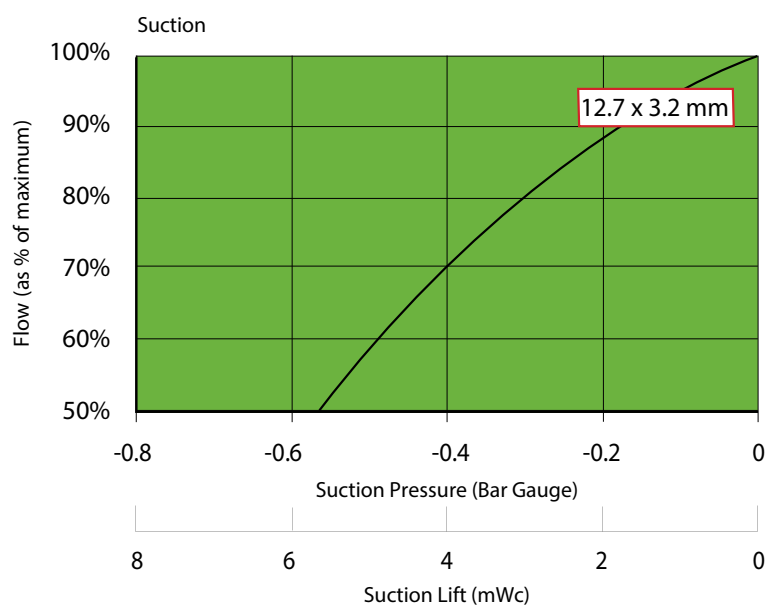
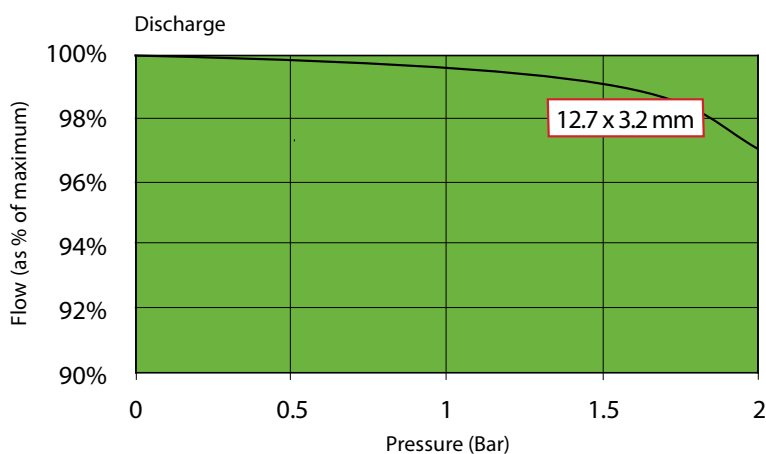
Verderflex

Rapide R8



All dimensions are in mm.

All dimensions and weights are for guidance only.



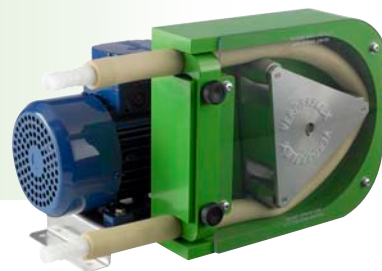
**Find your local supplier
at www.verderflex.com**

For construction installation and floor mounting drawings
please contact your local authorised Verderflex® distributor.

VERDER
passion for pumps

Verderflex

Rapide R12



VERDERFLEX®

Verderflex Rapide R12 Specifications

Standard Speeds	93 and 140 RPM
Control	Inverter Optional
Rotor Assembly	Anodised Aluminium with Three Nylatron® Rollers
Voltage	230/400V 50Hz (Single Phase Available to special order)
Installed Motor Power	0.18 kW 50Hz
Protection Class	IP55
Standard Tube Options	Verderprene, Silicone
Tube Size	15.9 x 4.8 mm
Weight	12kg

Flow Rates

Tube	RPM	Flow ml/min	Flow l/hr
15.9 x 4.8	*56	5,600	336
15.9 x 4.8	*70	7,000	420
15.9 x 4.8	93	9,300	558
15.9 x 4.8	140	14,000	840

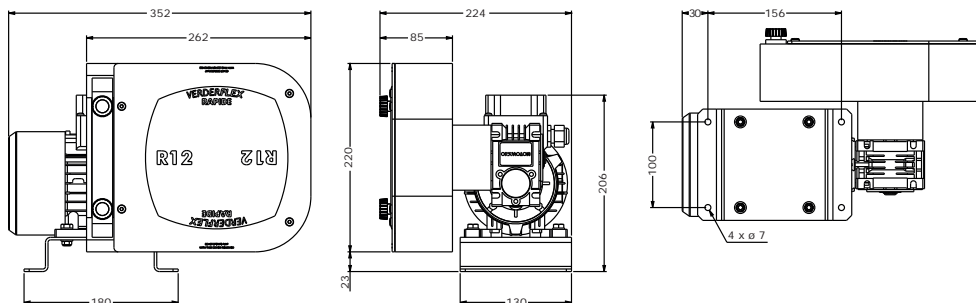
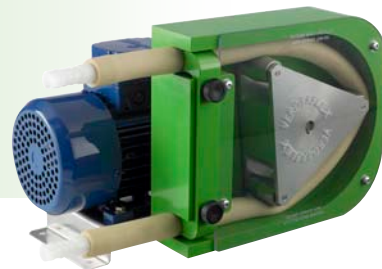
Nominal pump speed based on 50Hz operation
*56 and 70 RPM are a non-standard speed

Flows are typical and were measured with water at 20°C with no suction lift or discharge pressure. Actual flows will vary according to suction conditions, discharge pressure, tube material and production tolerances.

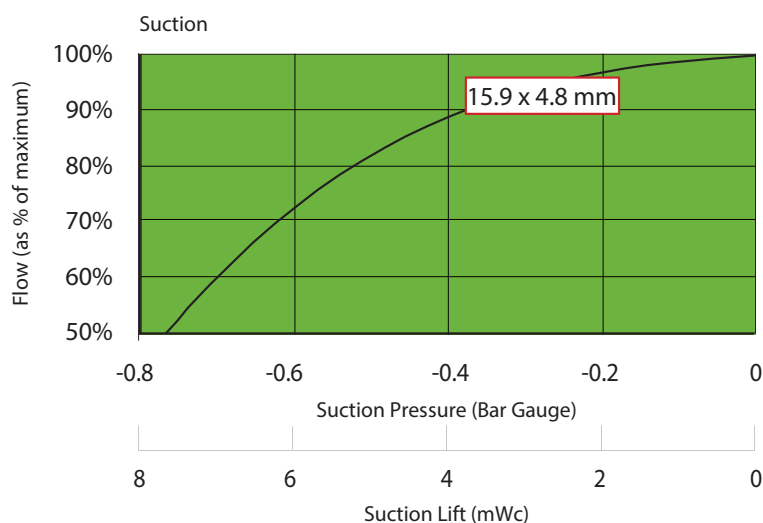
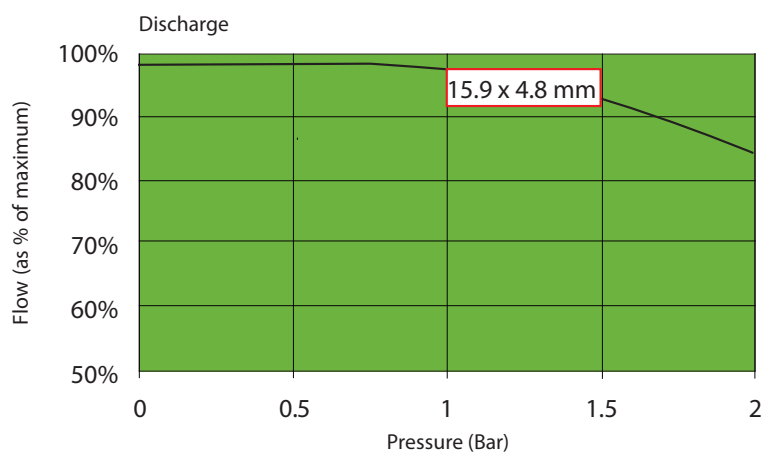


Verderflex

Rapide R12



All dimensions are in mm.
All dimensions and weights are for guidance only.



Find your local supplier
at www.verderflex.com

For construction installation and floor mounting drawings
please contact your local authorised Verderflex® distributor.

Verderflex

Rapide R17S



VERDERFLEX®

Verderflex Rapide R17S Specifications

Standard Speeds	60, 113, 151 & 220 RPM
Control	Inverter Optional
Multi-channel	Up to 4 channels (when factory built)
Voltage	230/400V 50Hz (Single Phase Available to special order)
Installed Motor Power	0.37 kW 50Hz
Protection Class	IP55
Standard Tube Options	Verderprene, Silicone
Tube Size	15.9 x 4.8 mm, 19.0 x 4.8 mm, 25.4 x 4.8 mm
Weight	21 kg

Flow Rates

Tube	RPM	Flow ml/min	Flow l/hr
15.9 x 4.8	60	2600	156
15.9 x 4.8	113	5000	300
15.9 x 4.8	151	6500	390
15.9 x 4.8	220	9400	564
19.0 x 4.8	60	2900	174
19.0 x 4.8	113	5600	336
19.0 x 4.8	151	7400	444
19.0 x 4.8	220	10800	648
25.4 x 4.8	60	4400	264
25.4 x 4.8	113	8300	498
25.4 x 4.8	151	11000	660
25.4 x 4.8	220	17000	1020

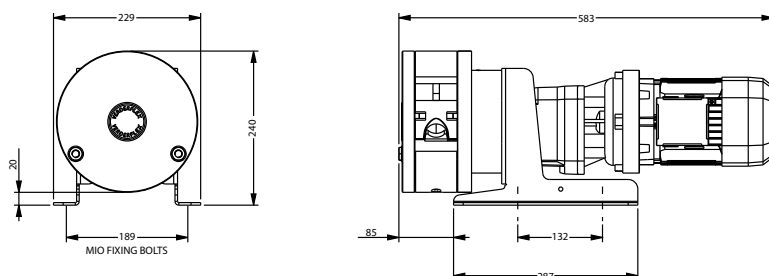
Nominal pump speed based on 50Hz operation

Flows are typical and were measured with water at 20°C with no suction lift or discharge pressure. Actual flows will vary according to suction conditions, discharge pressure, tube material and production tolerances.

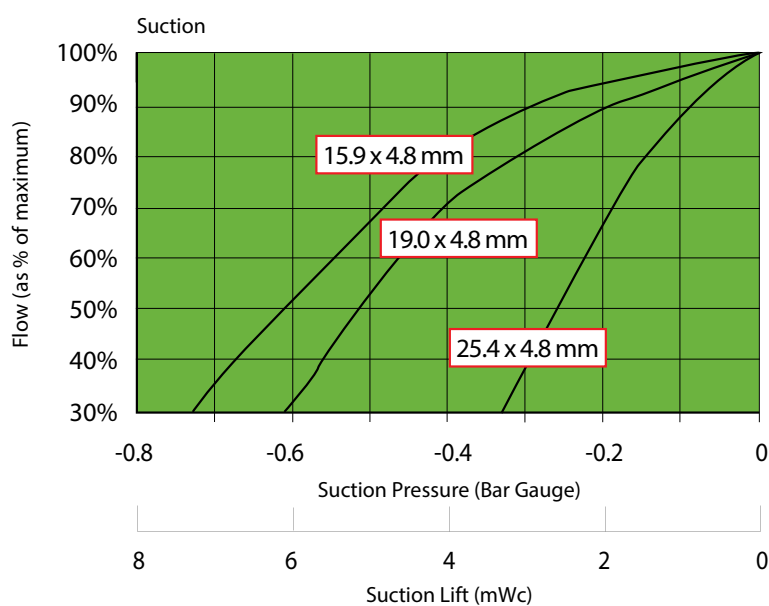
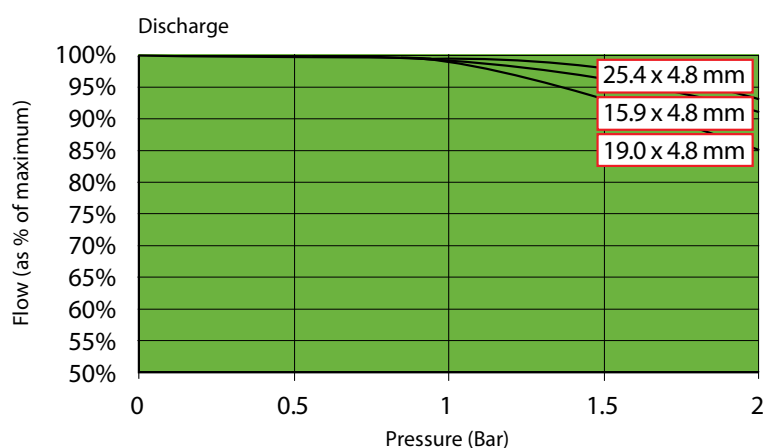


Verderflex

Rapide R17S



All dimensions are in mm.
All dimensions and weights are for guidance only.



Find your local supplier
at www.verderflex.com

For construction installation and floor mounting drawings
please contact your local authorised Verderflex® distributor.